

OKLAHOMA DEPARTMENT OF TRANSPORTATION						
FED. ROAD DIST. NO.	STATE	PROJ. NO.	FISCAL YEAR	SHEET NO.	TOTAL SHEETS	
	OKLA.					
DESCRIPTION		REVISIONS		DATE		

SECTION CORNER - O.D.O.T. D-22-480
 FOUND AND ACCEPTED A MAGNETIC NAIL. LOCATION IS IN AGREEMENT WITH OKLAHOMA CERTIFIED CORNER RECORD FILED IN 2010 AND 2004 AND IS IN HARMONY WITH EXISTING IMPROVEMENTS. SOME OF THE REFERENCE MONUMENTS WERE FOUND AND VERIFIED.

SECTION CORNER - O.D.O.T. D-22-484
 FOUND AND ACCEPTED A #4 BAR. LOCATION IS IN HARMONY WITH EXISTING IMPROVEMENTS. NO OKLAHOMA CERTIFIED CORNER RECORD WAS ON FILE FOR THIS LOCATION.

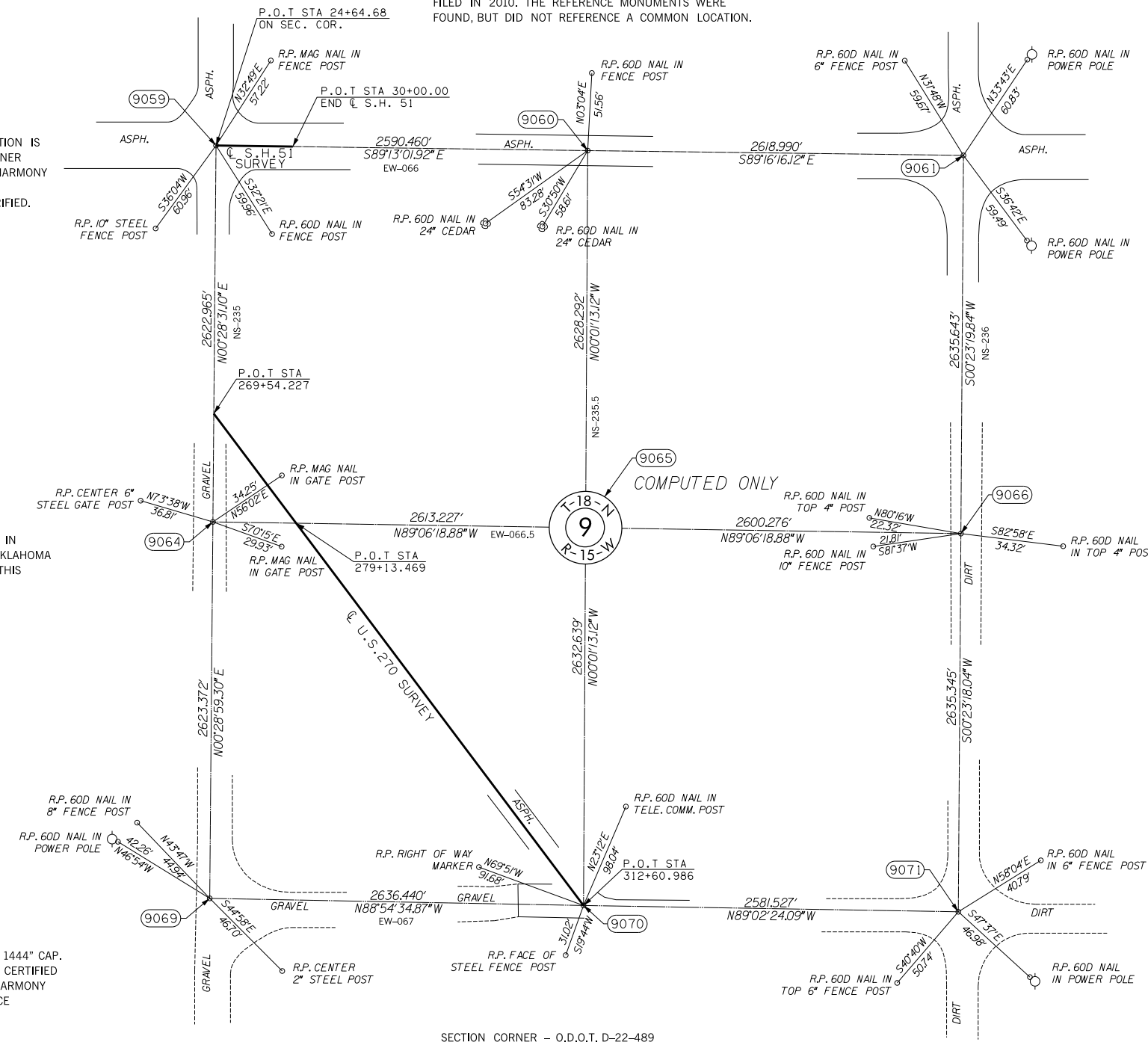
SECTION CORNER - O.D.O.T. D-22-488
 FOUND AND ACCEPTED A #4 BAR WITH "PLS 1444" CAP. LOCATION IS IN AGREEMENT WITH OKLAHOMA CERTIFIED CORNER RECORD FILED IN 1988 AND IS IN HARMONY WITH EXISTING IMPROVEMENTS. THE REFERENCE MONUMENTS WERE FOUND AND VERIFIED.

SECTION CORNER - O.D.O.T. D-22-481
 SET MAGNETIC NAIL WITH WASHER STAMPED "CA 2054". LOCATION WAS RE-ESTABLISHED USING EXISTING HIGHWAY PLANS. COULD NOT FIND THE MONUMENT REFERENCED IN OKLAHOMA CERTIFIED CORNER RECORD FILED IN 2010. THE REFERENCE MONUMENTS WERE FOUND, BUT DID NOT REFERENCE A COMMON LOCATION.

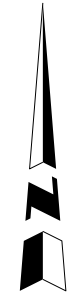
SECTION CORNER - O.D.O.T. D-22-482
 FOUND AND ACCEPTED A #4 BAR. LOCATION IS IN AGREEMENT WITH OKLAHOMA CERTIFIED CORNER RECORD FILED IN 2010 AND IS IN HARMONY WITH EXISTING IMPROVEMENTS. THE REFERENCE MONUMENTS WERE FOUND AND VERIFIED.

SECTION CORNER - O.D.O.T. D-22-485
 FOUND AND ACCEPTED A #3 BAR. NO OKLAHOMA CERTIFIED CORNER RECORDS WERE FILED FOR THIS LOCATION.

SECTION CORNER - O.D.O.T. D-22-490
 FOUND AND ACCEPTED A #4 BAR WITH "CA 980" CAP. LOCATION IS IN AGREEMENT WITH OKLAHOMA CERTIFIED CORNER RECORD FILED IN 2010 AND IS IN HARMONY WITH EXISTING IMPROVEMENTS. THE REFERENCE MONUMENTS WERE FOUND AND VERIFIED.



COMPUTED ONLY



SCALE:
 1" = 500'

NOTE: REFERENCE'S SHOWN ARE NOT TO SCALE.

OKLAHOMA DEPARTMENT OF TRANSPORTATION SURVEY DIVISION			
PLS	KH		
DRAWN	CF,SK		
CHECKED	KH		
APPROVED	KH		
CREW	JH,SA,BH,DR	SWO 4600 (1)	PROJECT NO. 17671(34) SHEET NO. 34

SURVEY DATA SHEET